



# DESTINATION ZERO

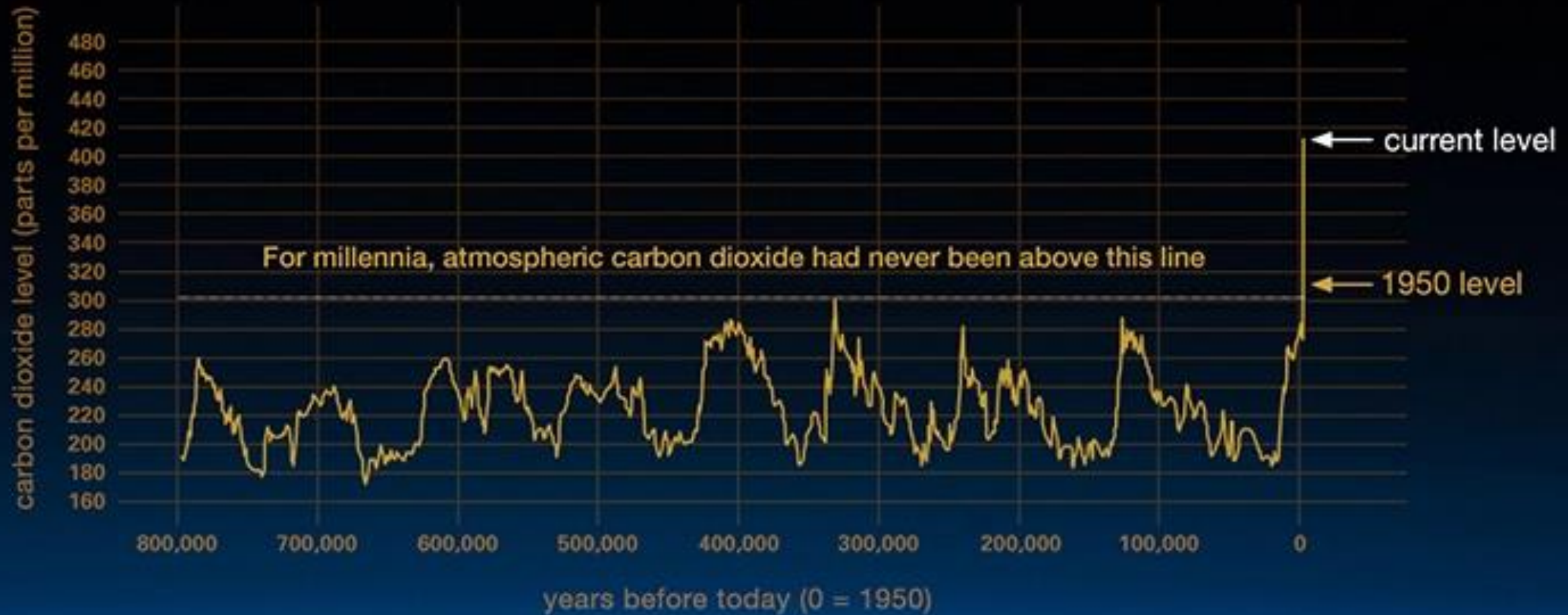
Creating a greener, more sustainable  
Malvern Hills district

Matt Barker  
Carbon Reduction  
Projects Officer

Malvern Hills &  
Wychavon District  
Councils

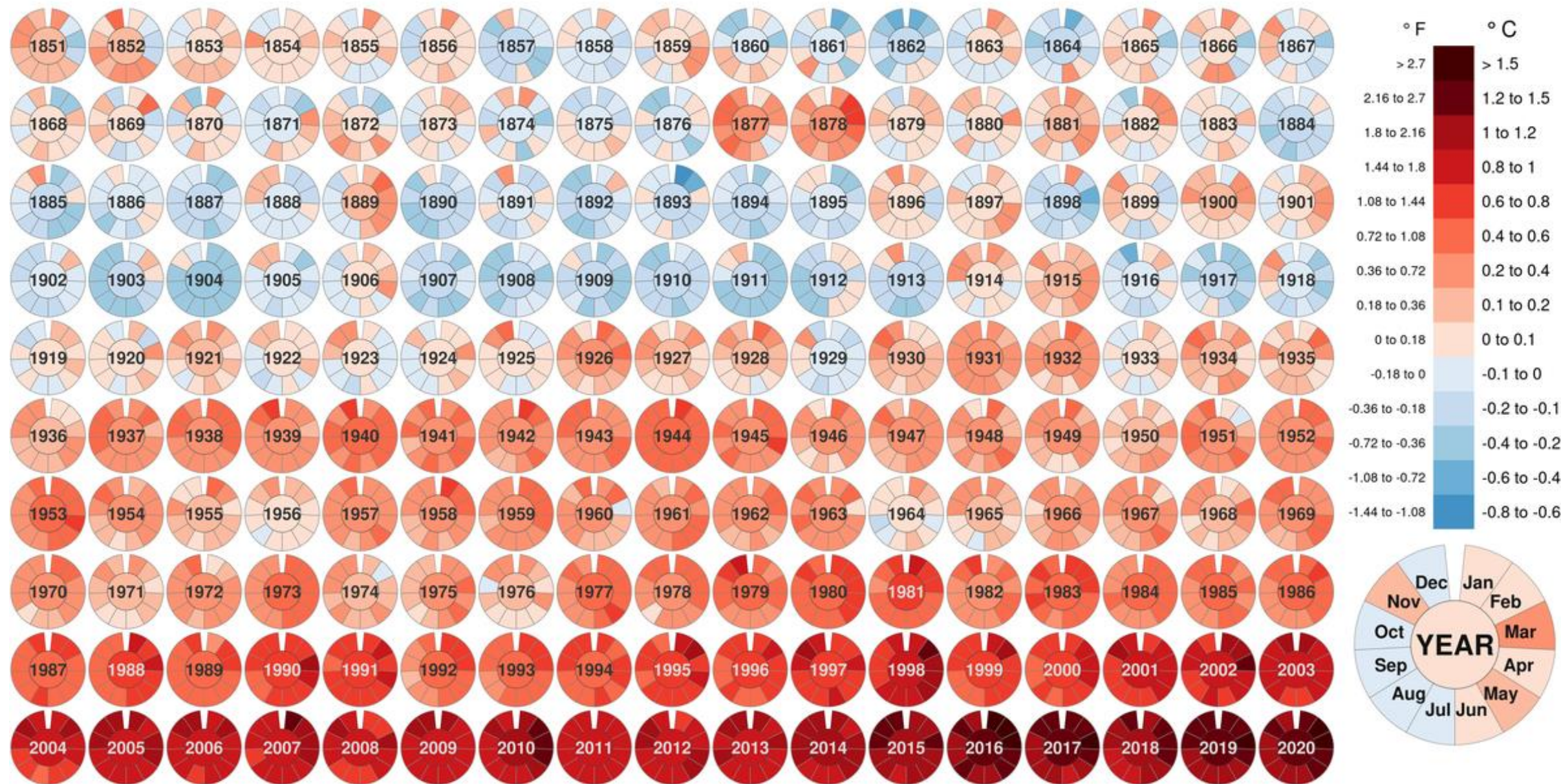
[Matthew.barker@malvernhills.gov.uk](mailto:Matthew.barker@malvernhills.gov.uk)

# Carbon Dioxide levels over 800,000 years





# Monthly global mean temperature 1851 to 2020 (compared to 1850-1900 averages)



Data: HadCRUT5 - Created by: @neilrkaye





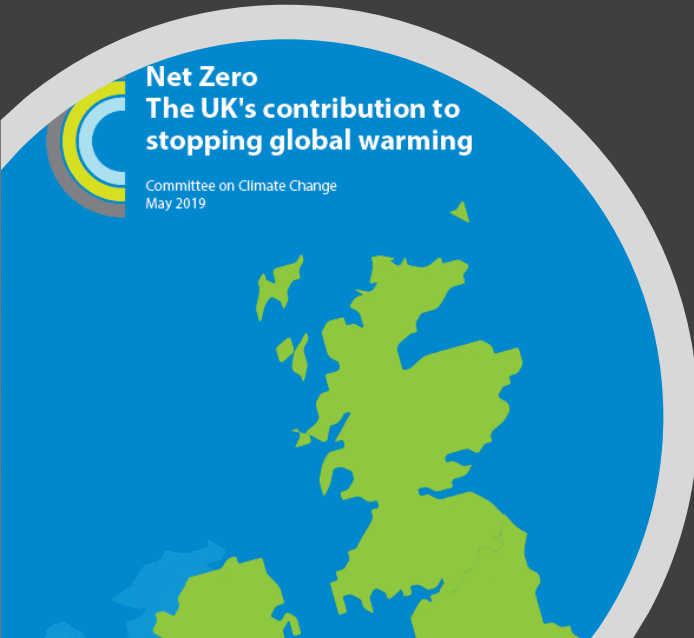
- UK Climate Change Act – a legal duty to reduce emissions
- Cut emissions by 78% by 2035
- Achieve net-zero carbon emission by 2050



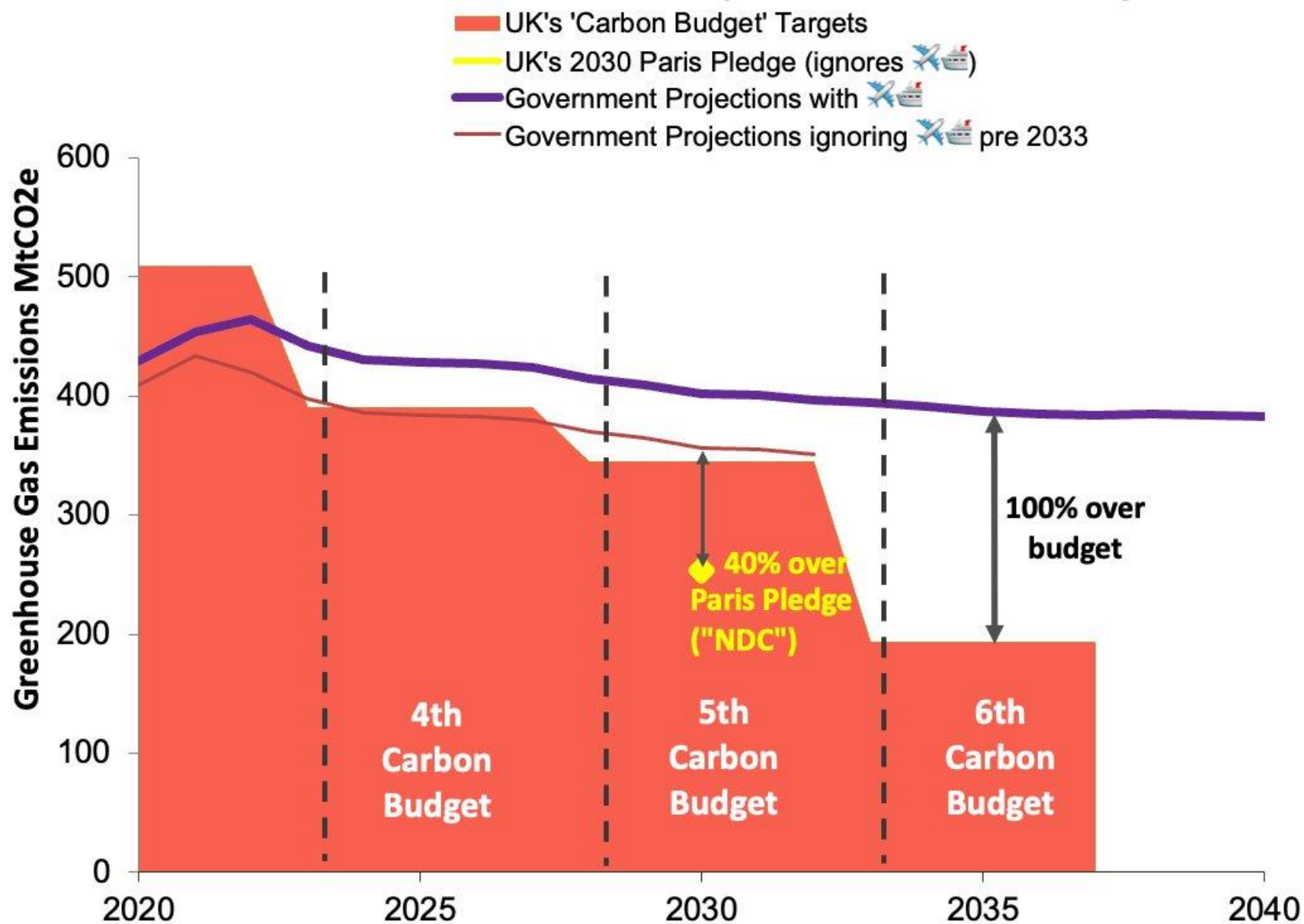
Climate Change Act 2008

**Net Zero**  
The UK's contribution to  
stopping global warming

Committee on Climate Change  
May 2019



# UK Government Projections vs Targets



Data source: BEIS Energy & Emissions Projections: 2021 - 2040

# What are MHDC doing?

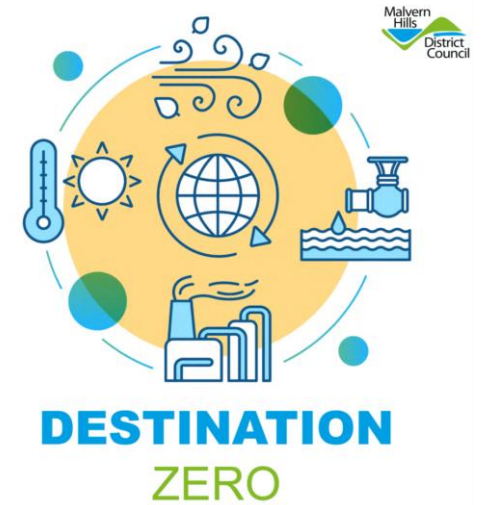
- Declared climate emergency – July 2019
  - Commitment to prepare a carbon reduction action plan
- Stakeholder engagement
  - MHDC Members & Staff
  - Town & Parish Councils
  - Community organisations
  - Statutory bodies etc
- DZ Plan adopted by MHDC in January 2020



**DESTINATION**  
**ZERO**

Creating a greener, more sustainable  
Malvern Hills district

**Vision: To lead Malvern Hills District to become carbon neutral as quickly as possible and by 2050 at the latest, with at least a 50% reduction in the district's carbon footprint by 2030.**



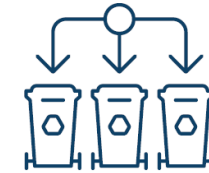
**Priority 1: Make Malvern Hills District Council's operations carbon neutral by 2030**



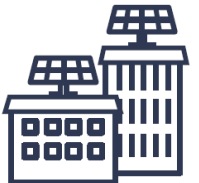
**Priority 5: Support businesses to become more energy efficient**



**Priority 2: Encourage low carbon development and design measures to improve resilience and adaptation to climate change**



**Priority 6: Reduce the amount of waste going for landfill or incineration from the district's households and businesses**



**Priority 3: Improve the energy efficiency of homes across the district**



**Priority 4: Encourage low carbon travel**



**Priority 7: Use tree planting, pollinator sites, wetlands, wildflower meadows and other natural measures to capture and store carbon**

# Key measures of success.....

Reduce

Council's own GHG emissions to net-zero

Reduce

district-wide GHG emissions towards net-zero

Grow

size of the low carbon economy

Increase

the amount of renewable energy generated

Increase

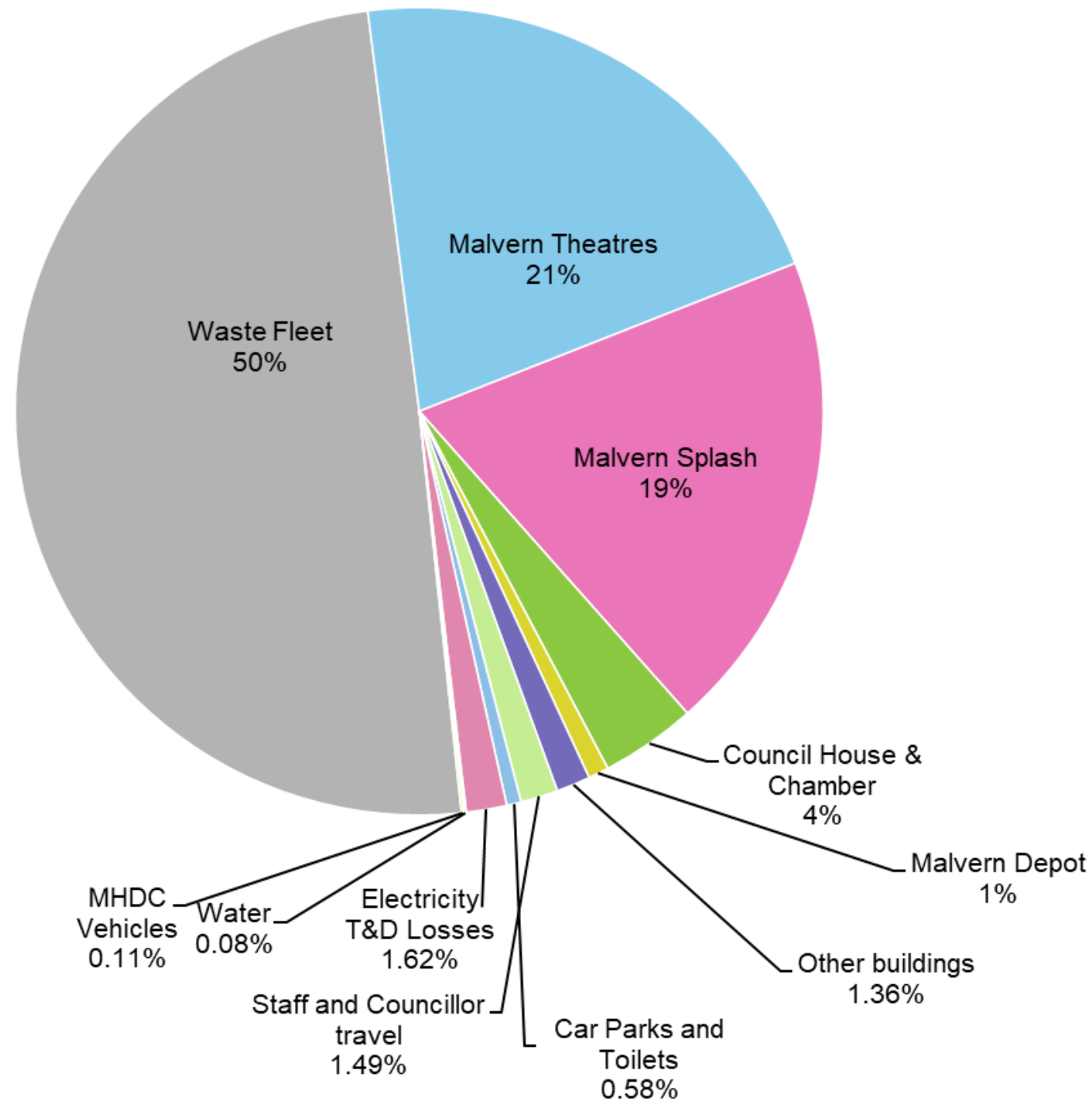
the amount of carbon captured through Council action



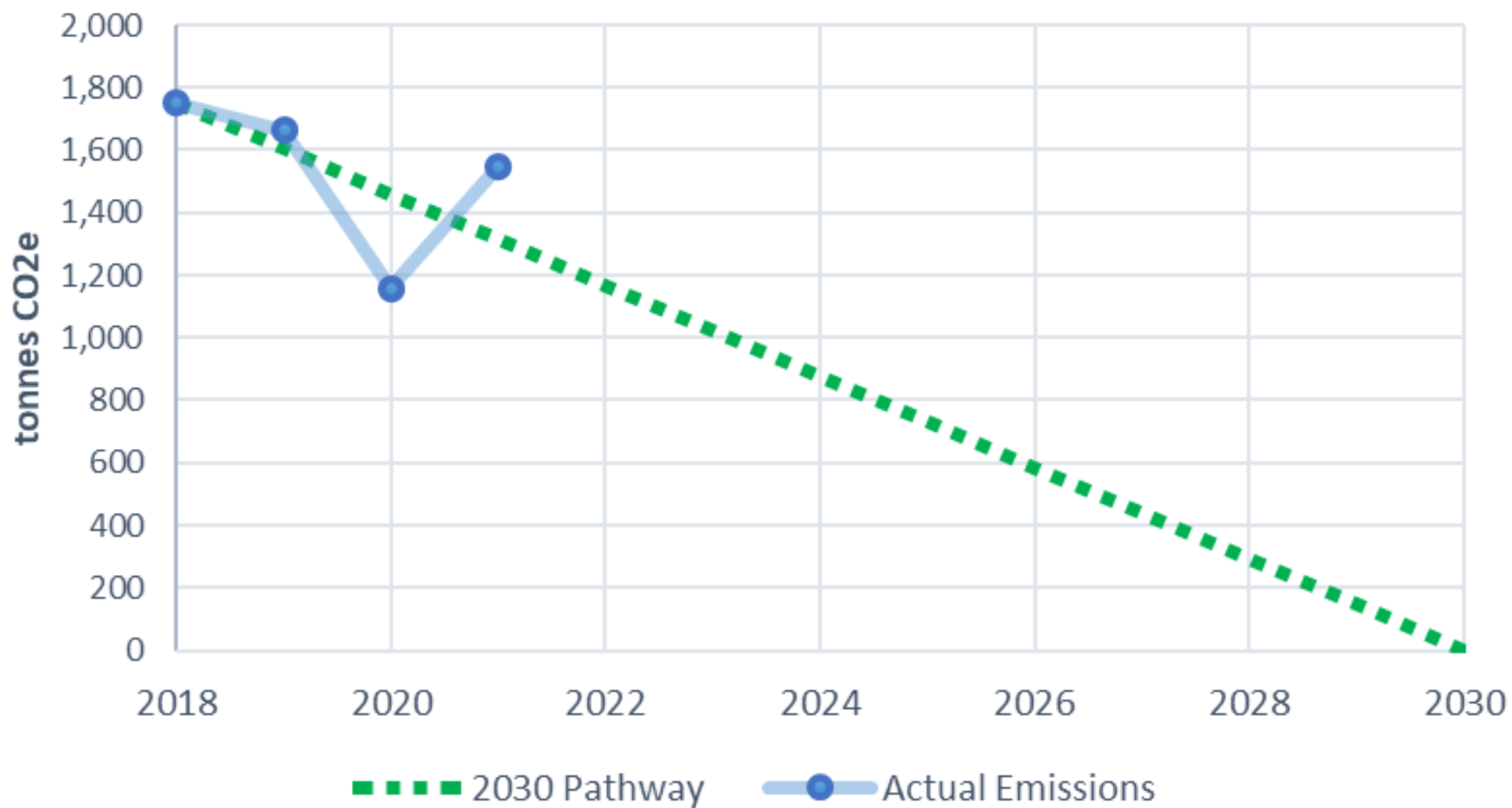


# Destination Zero Annual Update 2021/22

# MHDC Carbon Emissions 2021/22

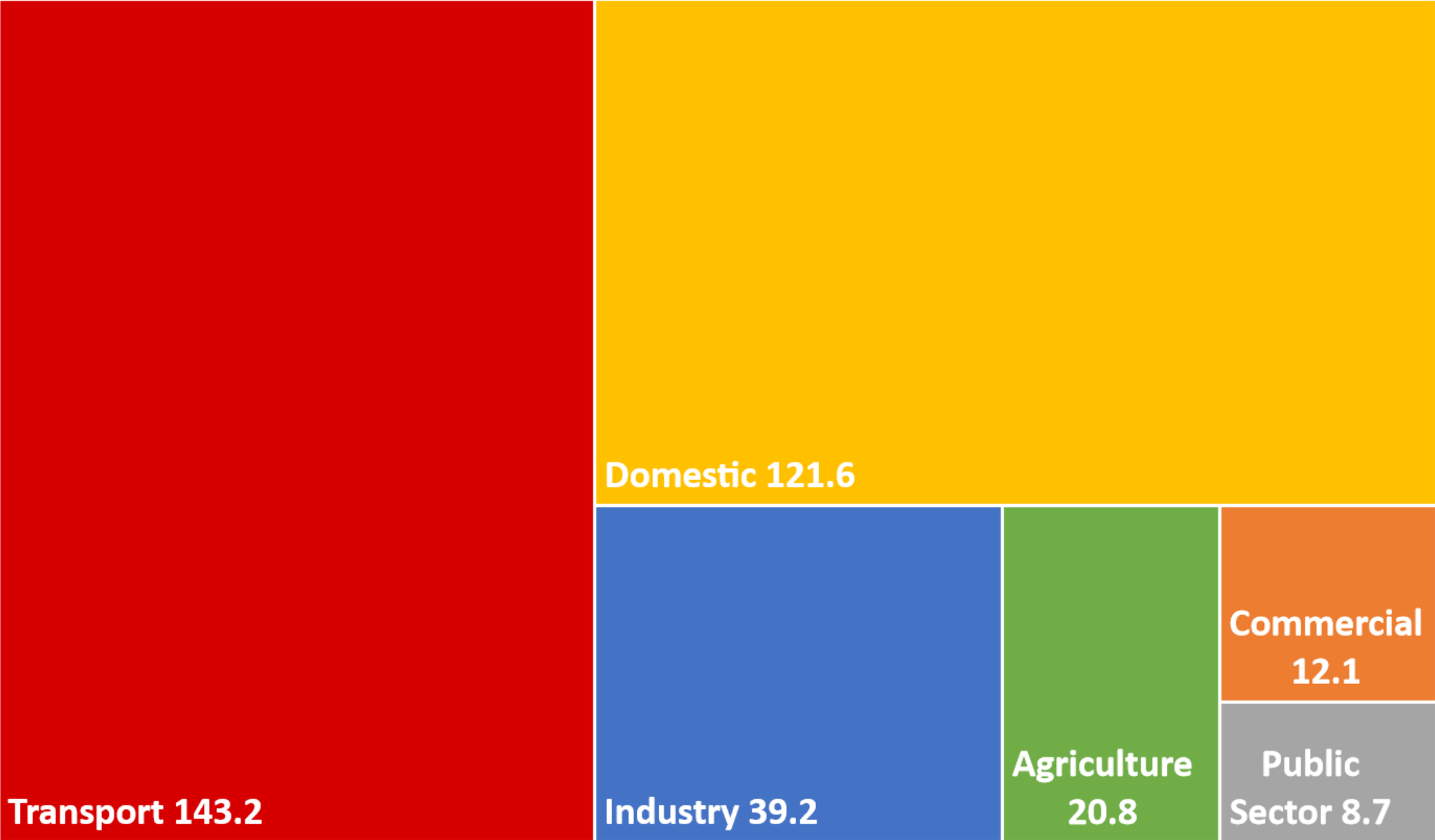


## Net-zero pathway to 2030 for MHDC's own emissions

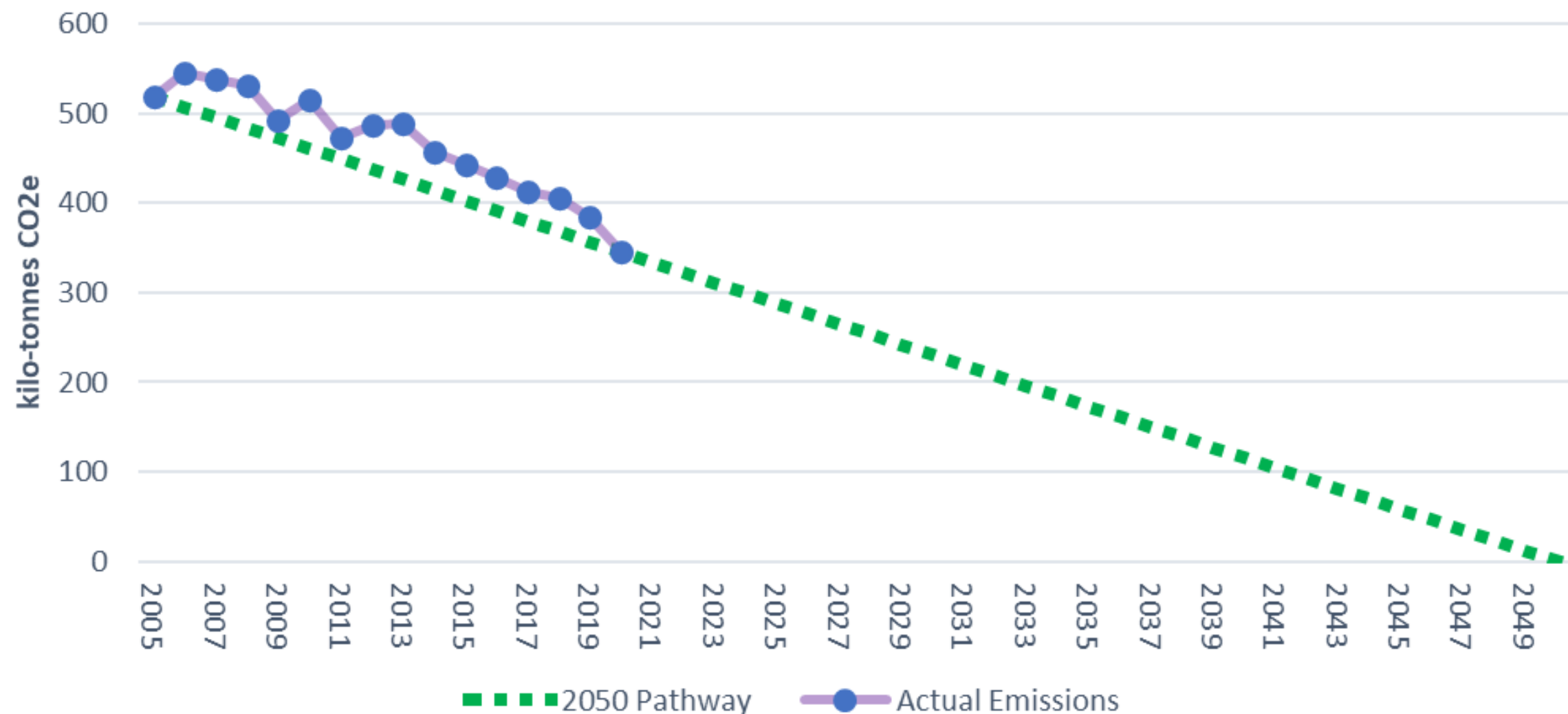




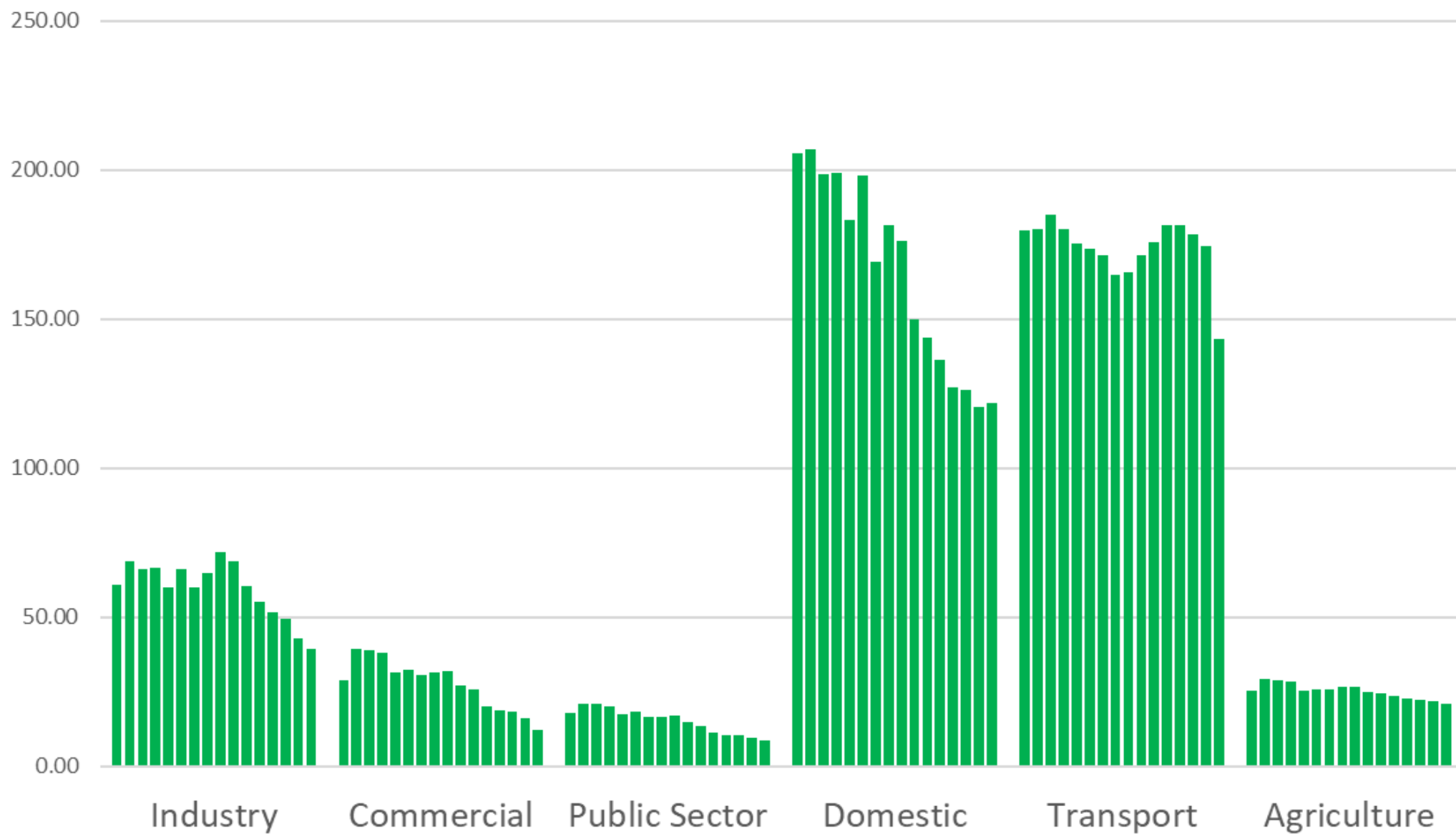
Malvern Hills district - CO2e emissions by sector 2020



## Net-zero pathway to 2050 for Malvern Hills District emissions (within the scope of influence of Local Authorities)

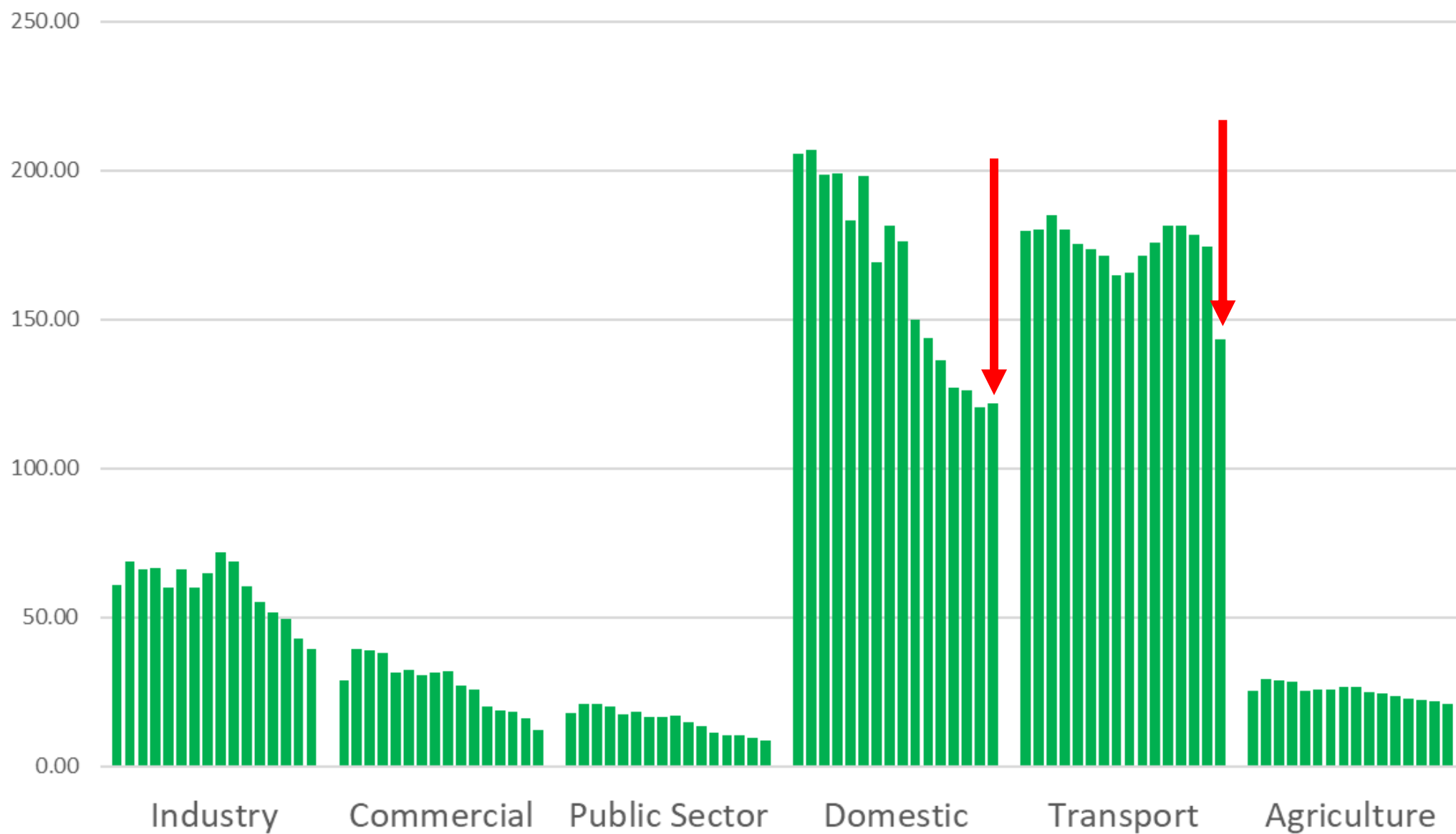


## CO2e emission by sector from 2005 to 2020

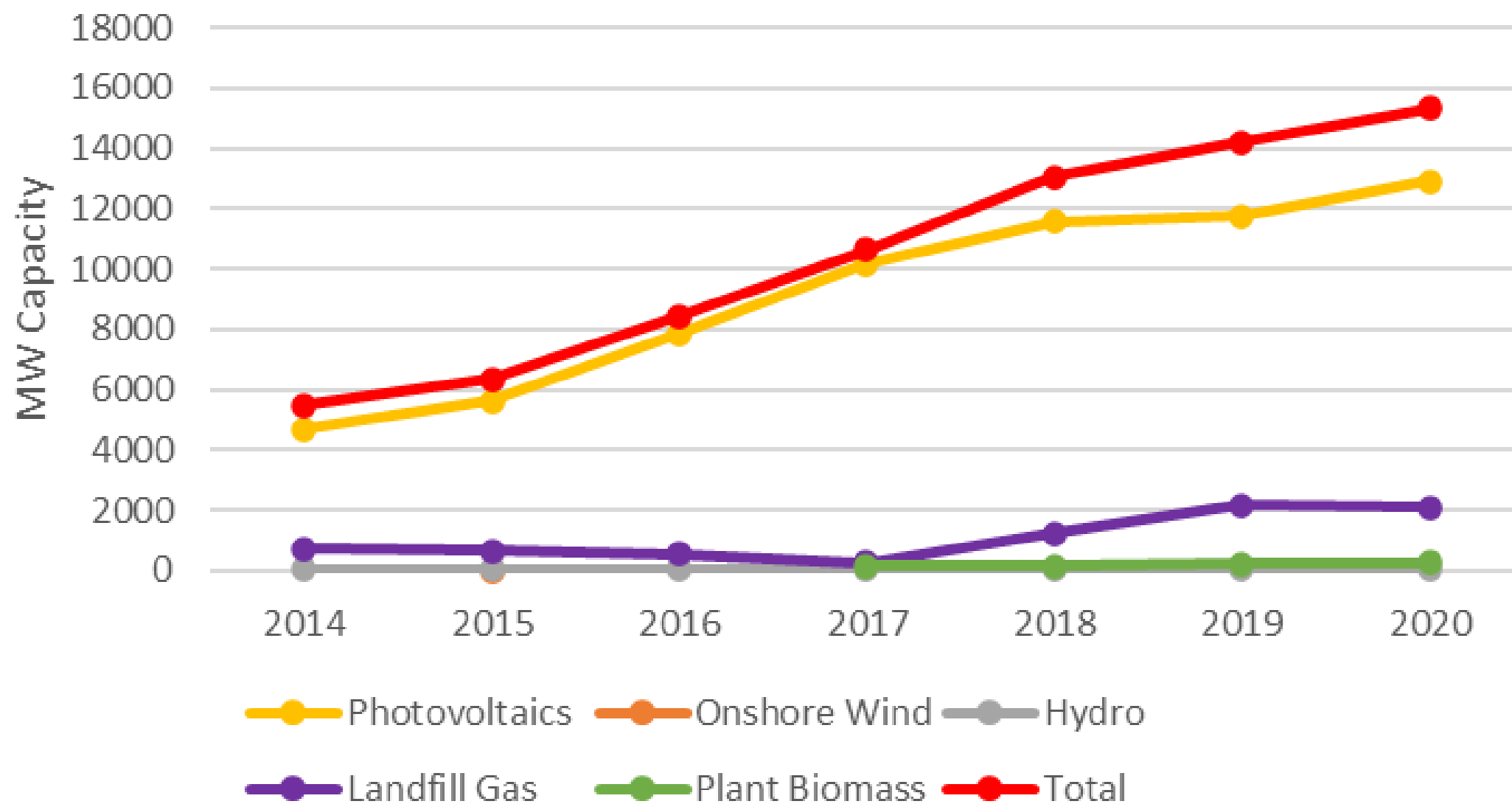


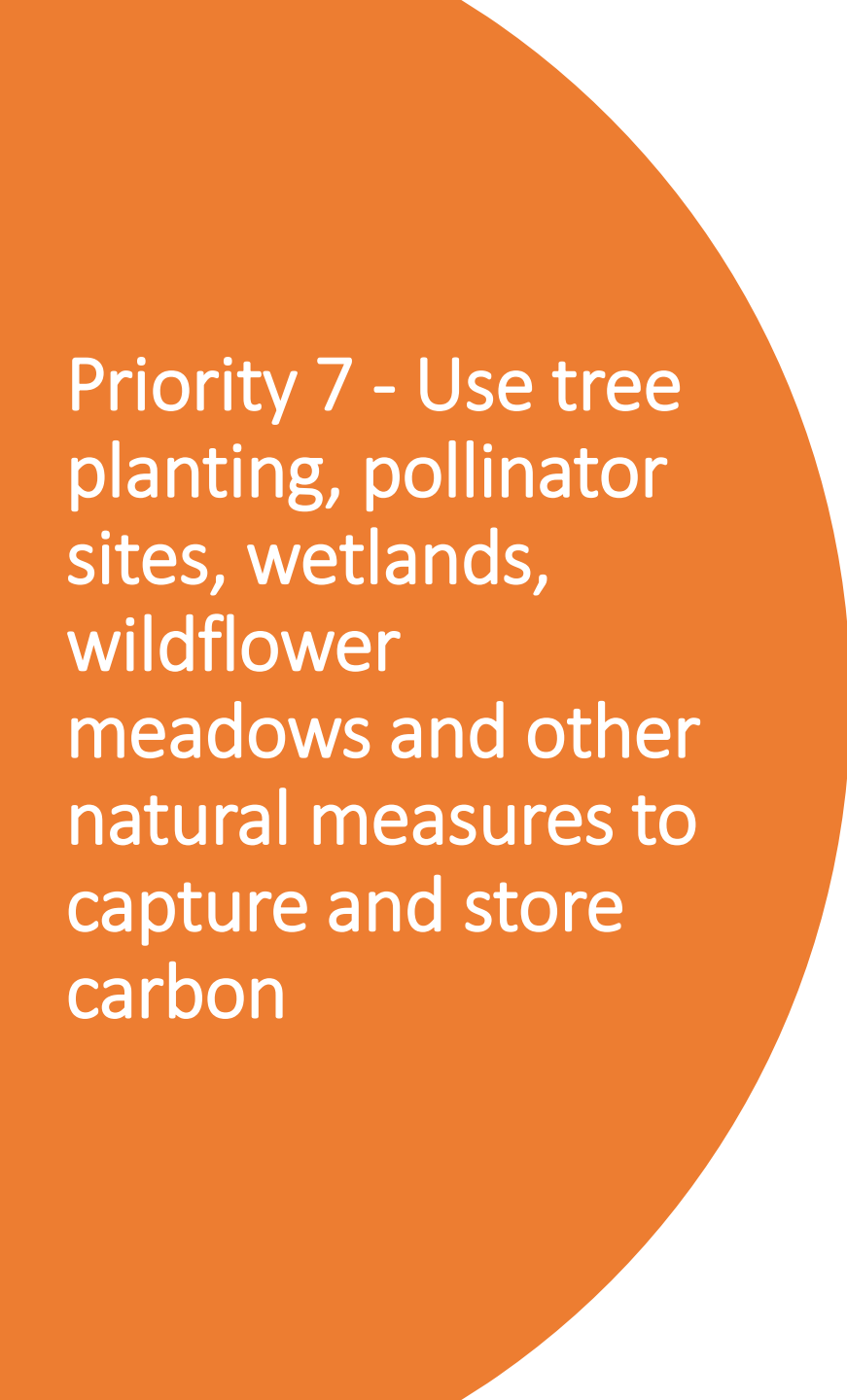


## CO2e emission by sector from 2005 to 2020



## Renewable energy generation in Malvern Hills District

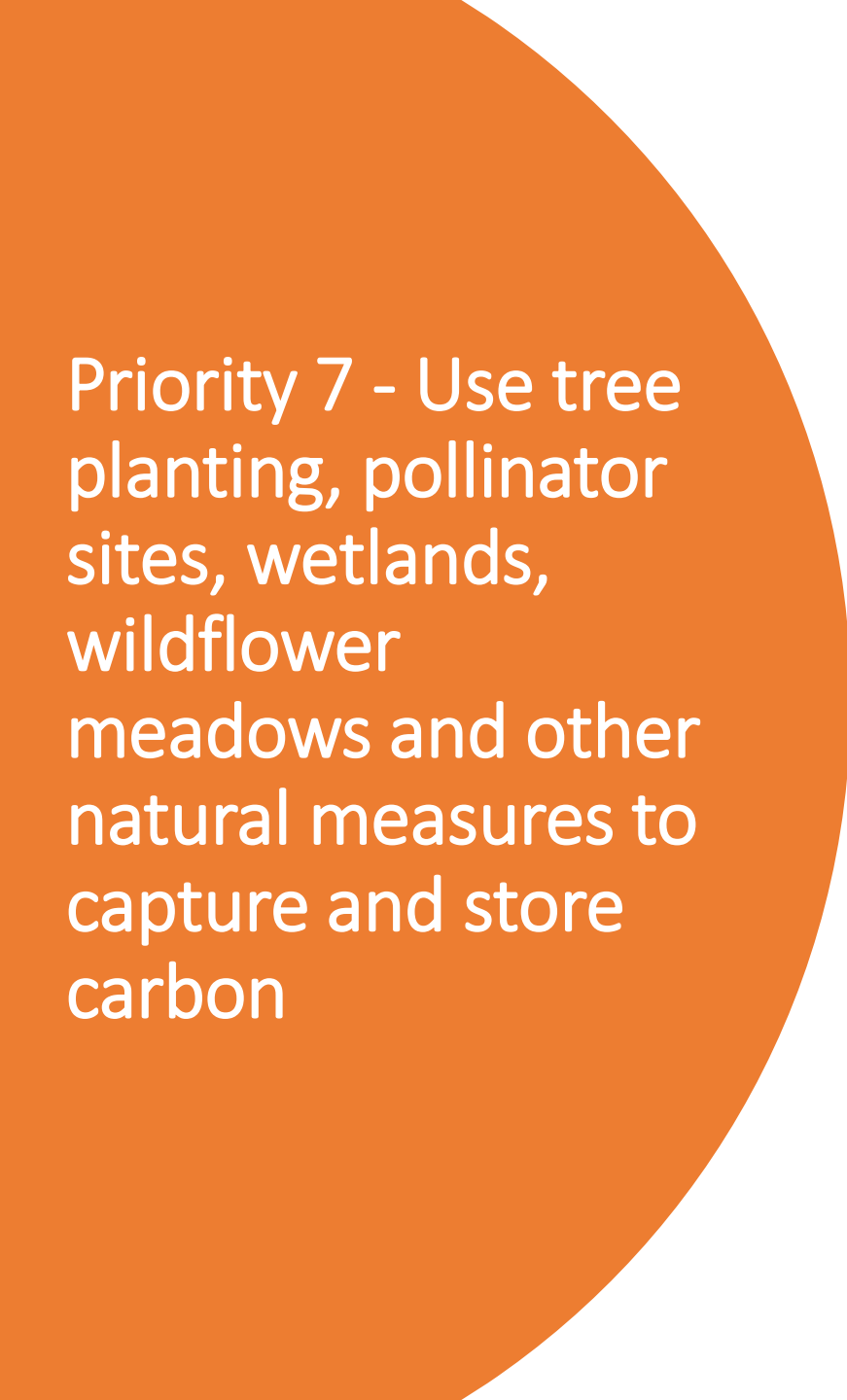


A large orange circle is positioned on the left side of the slide, partially overlapping the text area.

## Priority 7 - Use tree planting, pollinator sites, wetlands, wildflower meadows and other natural measures to capture and store carbon

- Identify council owned land suitable for habitat restoration, including tree planting and other forms of carbon capture
- Implement the restoration and enhancement of the land at Hallow for biodiversity/habitat improvement and carbon sequestration
- Work with parish councils, partners and other landowners to encourage habitat restoration and creation projects and other forms of carbon capture on land they own



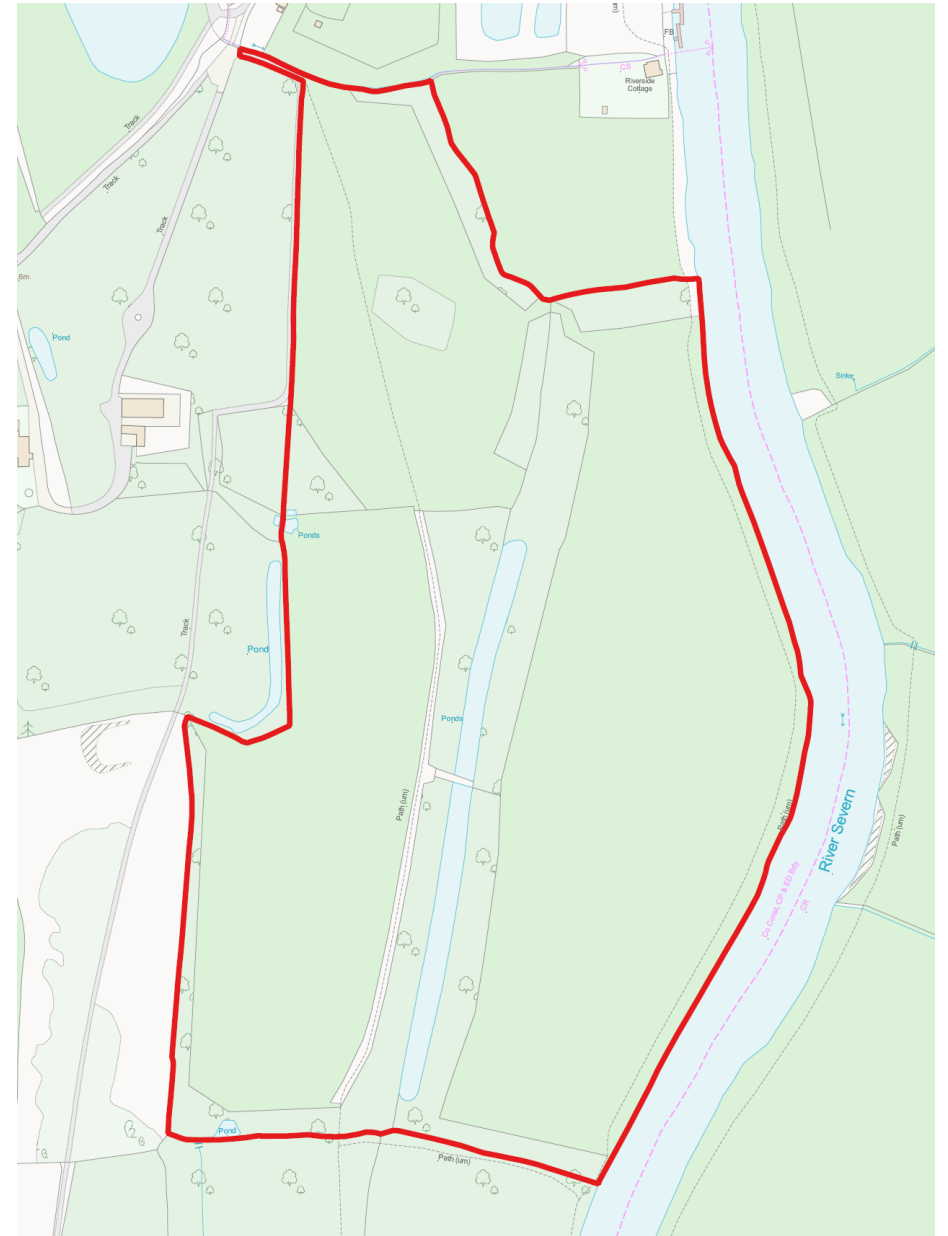
A large orange circle is positioned on the left side of the slide, partially overlapping the text area.

## Priority 7 - Use tree planting, pollinator sites, wetlands, wildflower meadows and other natural measures to capture and store carbon

- Implement priority conservation objectives featured in the Biodiversity Action Plan and work with partners across Worcestershire to restore and enhance species, habitats and their connectivity through Nature Recovery Networks
- Reduce the cutting of verges (not at the cost of highway safety) and open spaces to protect wildflowers
- Explore more sustainable options for disposing of green waste from our own activities/land

# Land at Hallow

- MHDC purchased in 2020 – 18ha of degraded arable land
- Restore species-rich flood meadow and fen
- Improve overall biodiversity of the site and specific habitats
  - Seasonal wetlands, wildflower meadows, hedgerow planting, reseeded grassland
- Soil carbon sampling to track sequestration as a result of site restoration
- Improving water quality and alleviating flooding
- Improved visitor accessibility



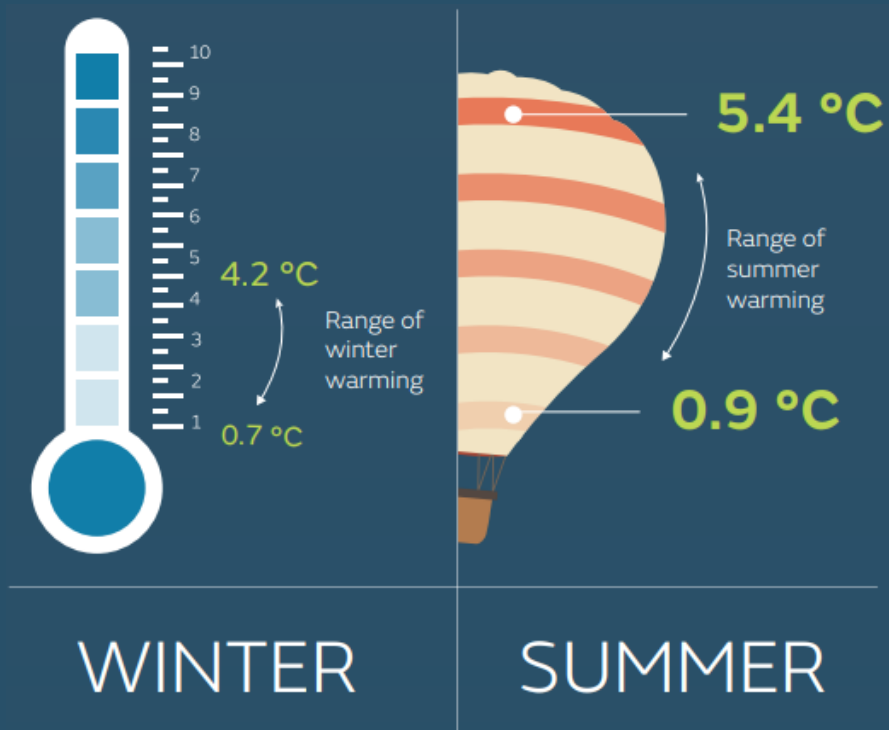
# UK CLIMATE PROJECTIONS

  
Department  
for Environment  
Food & Rural Affairs

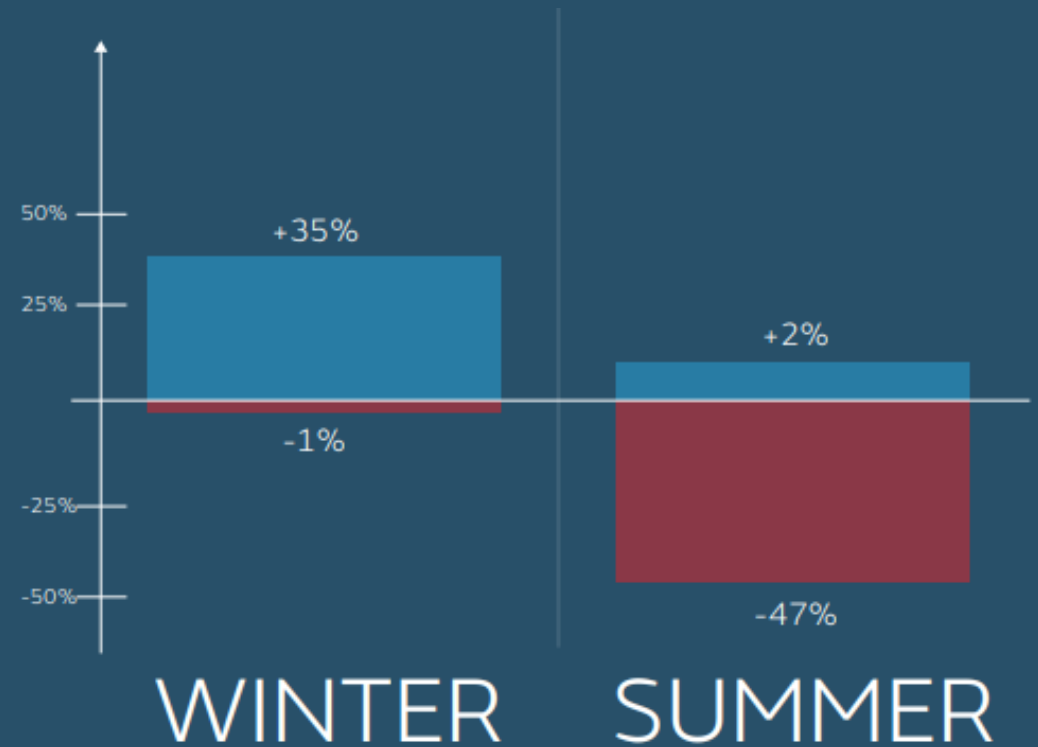
  
Department for  
Business, Energy  
& Industrial Strategy

 **Met Office**  
Hadley Centre

 Environment  
Agency



**Warmer winters and summers**



**Wetter winters and drier summers**

# Flooding...





# Heatwaves...

## Drought

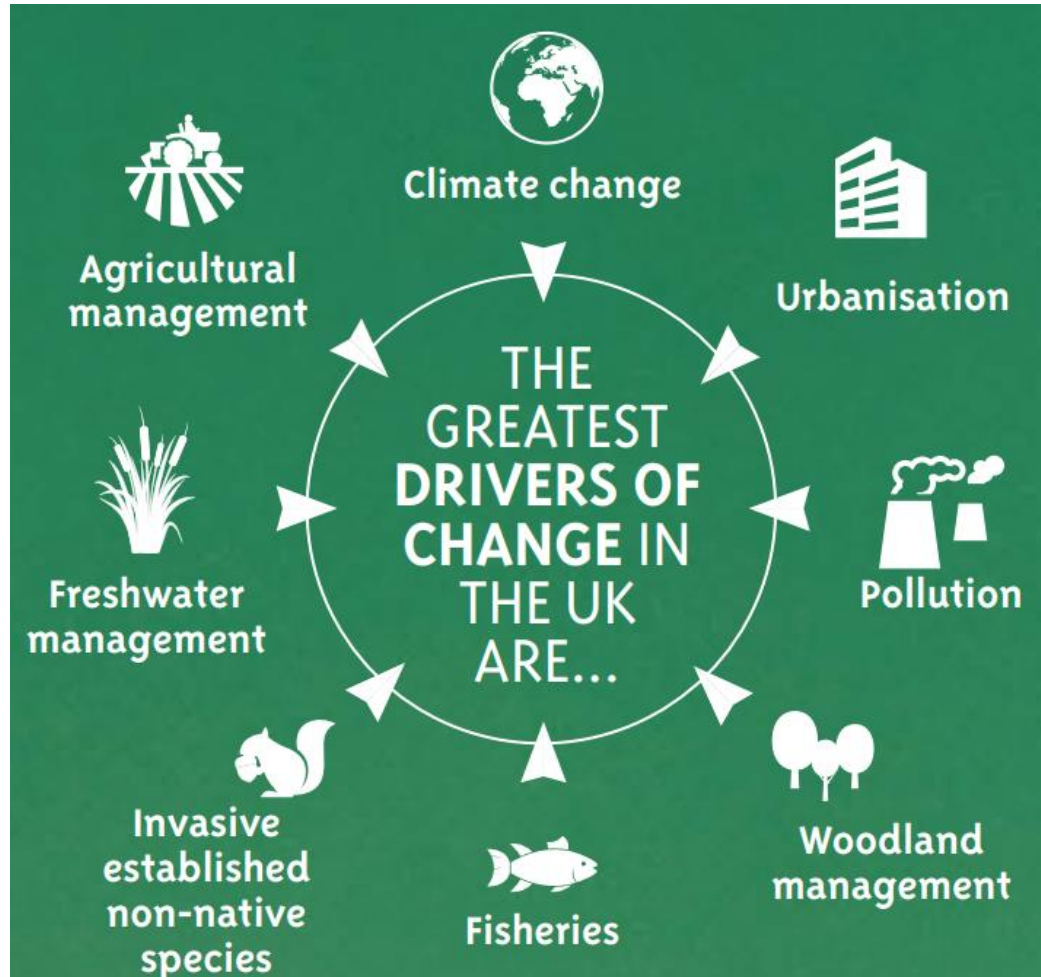


## Wildfire





# Ecological Emergency



## THE UK'S BIODIVERSITY IS DECLINING



**15%**

of species are threatened with **extinction** from Great Britain



**133**

of 8431 assessed have already become extinct from Great Britain

### SINCE 1970...

More species have seen their **populations decrease** than increase:

**41%**

have decreased

**33%**

little change

**26%**

have increased





# What are the biggest impacts/risks to the AONB?

Effects on the health and wellbeing of people

Flooding

Drought and heatwaves

Damage to buildings and infrastructure

Wildfires


Erosion, landslip and loss of soil

Effects on crops, livestock and forestry


Pollution of watercourses

Changes to habitats and species


# It's about mitigation and adaptation....



**Mitigation** - making the impacts of climate change less severe by preventing or reducing the emission of greenhouse gases into the atmosphere.



**Adaptation** - anticipating the adverse effects of climate change and taking appropriate action to prevent or minimise the damage they can cause



## What are the control/influences of the AONB Partnership?

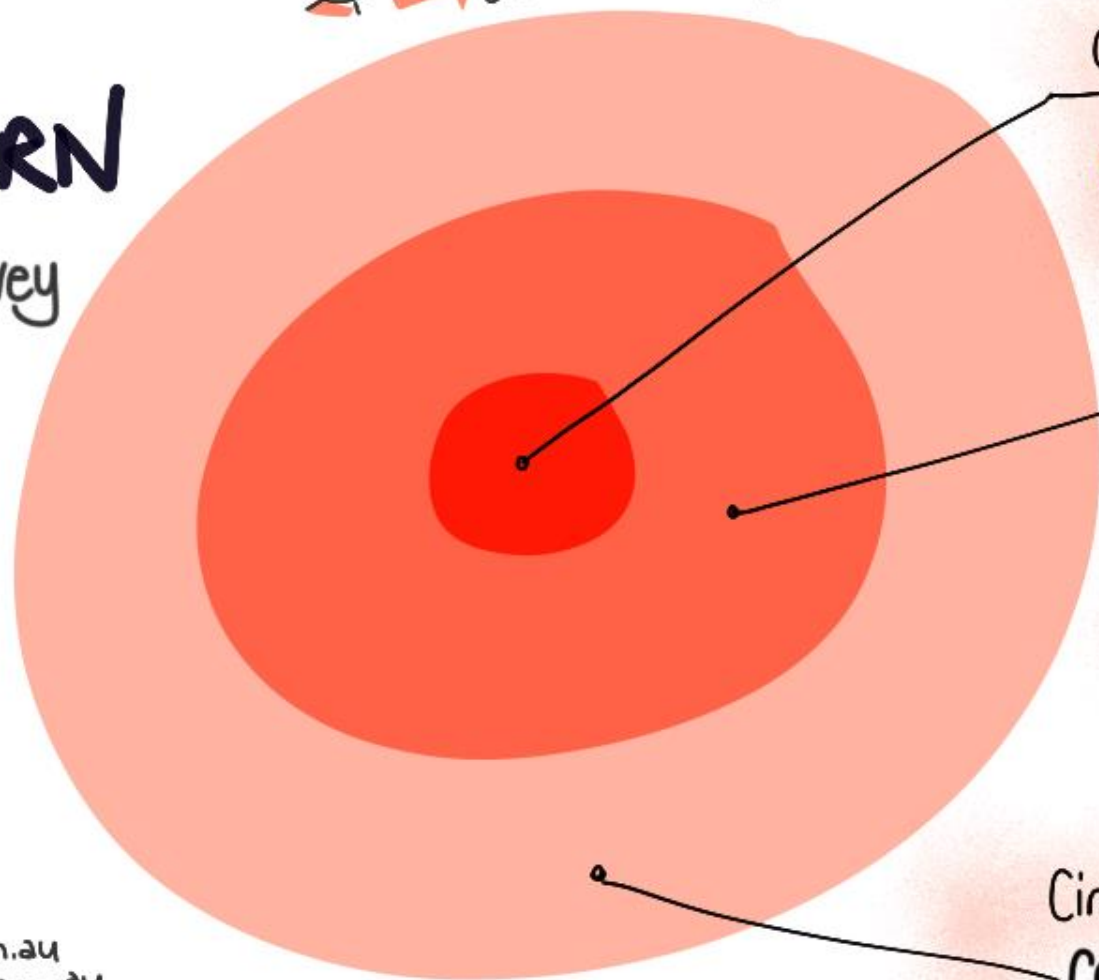
- Management of land partners own e.g. Malvern Hills trust
  - Working with partners to ensure climate resilient practices – mitigation/adaptation
- AONB Management Plan
  - Greater recognition and guidance on climate change?
- Grants and funding – only contributing to climate positive aims
- Active travel – provision of bike infrastructure, walking/cycling signposting

# CIRCLE of CONCERN

by Stephen Covey



We need to focus our energies on what we can control + influence!



Circle of CONTROL

What we can directly control

Circle of INFLUENCE

The concerns we can do something about

Circle of CONCERN

Wide range of concerns

© discoveryinaction.com.au  
eyesandassociates.com.au

DRAWING



What we cannot control or influence we need to LET GO of!

# Planning for action on climate change....



- Make the public commitment to tackle climate change
- Identify and prioritise actions:
  - Where are the key risks and impacts to the AONB
  - Actions where you have control or strong influence
  - Have the biggest impacts
  - Timeframes – short/medium/long
- Specify who will be responsible for delivery
  - Which partners are necessary?
  - Resources?
- What will be the monitoring and measures of progress?



Thank You!